

Part No. : AES-SN-101

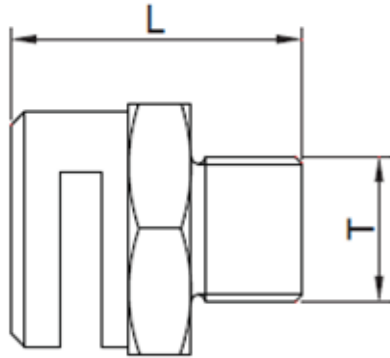
**Data Sheet No.**

AES-DT-SN001

Rev : 0

Date: 09/13/2014

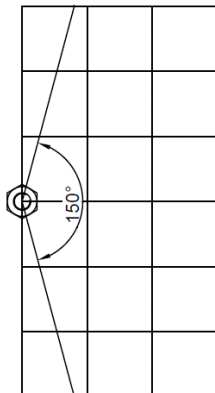
Page 1 of 1



**Model No. : AES-SN-101**

**CONSTRUCTION FEATURES**

- Material: Brass, S.S 304
- Maximum Working Pressure: 12 Bar
- Effective Working Pressure: 1.5 ~ 7 bar
- End Connection: 1/2" or 3/4" , BSPT or NPT
- K-Factor: 23, 30, 37, 45, 53, 72, 98, 120, 140
- Finish: Natural Brass finish, chrome plated brass
- Discharge Angle: 150 °



Size	T	L
1/2"	1/2" BSPT	42
3/4"	1/2" BSPT	46