



## Product Data Sheet

### Deluge Valve

Data Sheet No.

AES-DSH-026

System:  
Water Extinguishing System

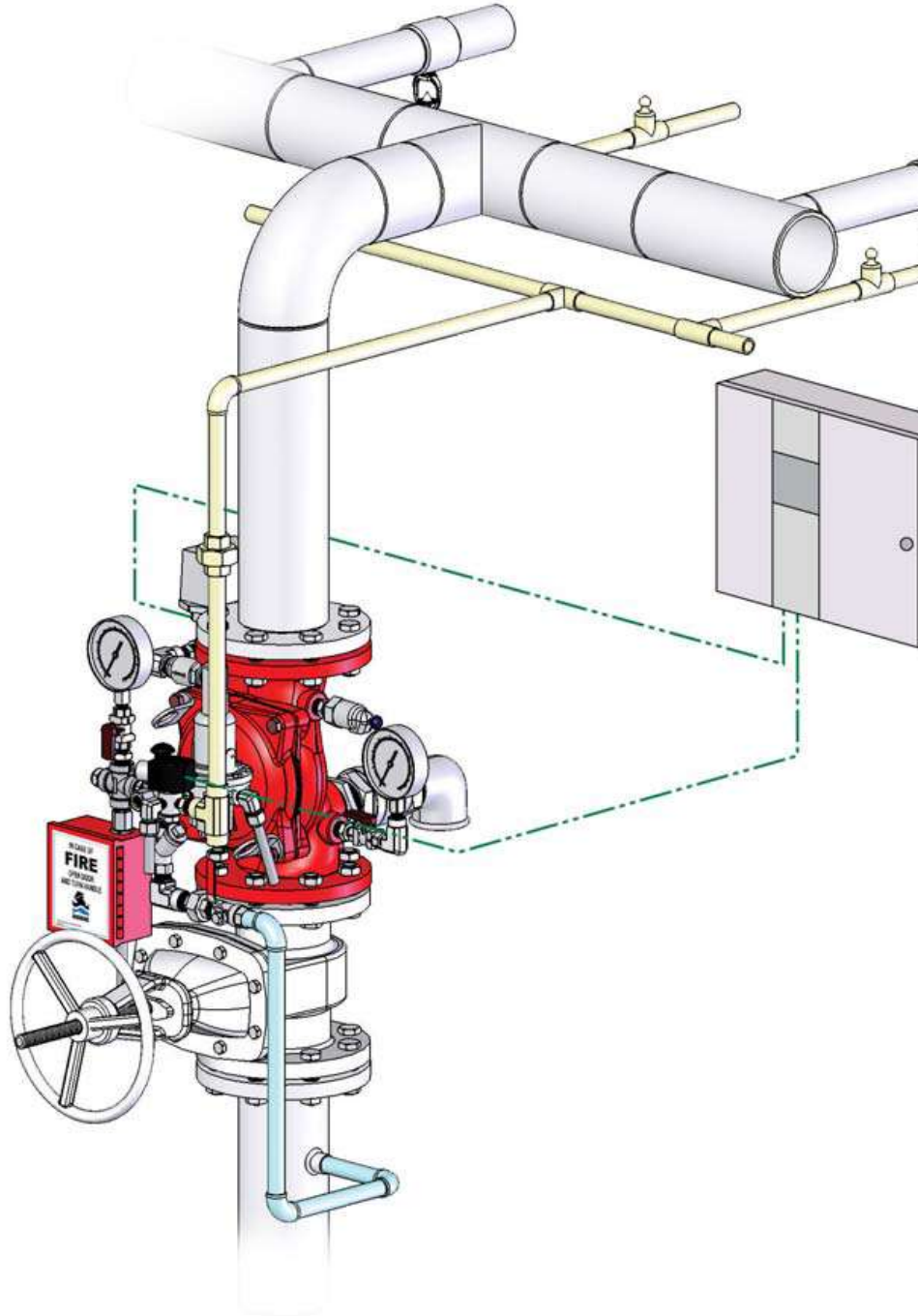
Rev: 0

Date: 09/13/2020

Page 1 of 6

Model No: AES-FS-001

مشخصات فنی	Description
شیرسیلابی جهت سیستم اطفاء حریق اتوماتیک آب و فوم بکار می رود.	The deluge valve are used to control water flow in automatic water and foam system.





## Product Data Sheet

### Deluge Valve

**System:**  
Water Extinguishing System

**Data Sheet No.**

Rev: 0

Date: 09/13/2020

Model No: AES-FS-001

AES-DSH-026

Page 2 of 6

#### General

Type	Elastomeric Globe Valve
Fluid Type	Firewater / Foam Solution
Pressure Rating	Max. working pressure: 250 psi (17 bar)
Connection Standard	Flanged: ANSI B16.42 (Ductile Iron), B16.5 (Steel & Stainless Steel), B16.24 (Bronze) ISO PN16
Available Sizes	1½, 2, 2½, 3, 4, 6, 8, 10 & 12"
Pressure Rating	Max. working pressure: 250 psi (17 bar)
Main valve body and cover	Ductile Iron ASTM A-536, Carbon Steel ASTM A-216 WCB, Stainless Steel 316, Ni-Al-Bronze ASTM B-148
Elastomers	Nylon fabric reinforced polyisoprene NR
Coating	Electrostatic Powder Coating Polyester, Red (RAL 3002)
Control Trim	Stainless Steel 316, Monel and Ni-Al-Bronze

#### Solenoid Pilot Valves

Standard	3-Way, direct actuated type, Brass body, Main valve closed when de-energized, Enclosure: General purpose watertight, NEMA 4 and 4X / IP65, Class F, Power: 24VDC, 8 watts, UL – Listed
----------	--

#### Hydraulic Relay Valve

Manufacturer	Bermad
Materials	Nickel plated Brass, Stainless Steel 316
Elastomers	NBR
Wetted Parts	Brass, Stainless Steel 316
Orifice	3/8" (9 mm)
Pressure Rating	21 bar (300 psi)
Temperature	Water up to 80°C (180°F)
Flow factor	KV 1.3 (CV 1.5)
End Connections	3/8" NPT
Approvals	UL-Listed

#### Accelerator with Priming Restriction

Manufacturer	Bermad
Materials	Stainless Steel 316, Monel (alloy 400)
Models	2436 - For 1½ - 4" valves, 3248 - For 6 - 10" valves, 4272 - For 12 - 14" valves
Pressure Rating	25 bar (365 psi)
Connections	Inlet: ½" NPT male, Outlet: ½" NPT female
Approvals	UL Listed, VdS Certified

#### 2-Way Ball Valve

Materials Body	Brass, Stainless Steel,
Ball	Stainless Steel

#### Pressure Switch

Manufacturer	Potter
End Connections	Pressure: ½" NPT (M), Electric: 12 mm Conduit Hole
Pressure Rating	17 bar (250 psi)

#### Water Motor Alarm

Inlet	¾" NPT
Outlet drain	1" NPT
Water Working Pressure	Max: 12 bar (175 psi), Min: 1 bar (15 psi)

#### Finish

Electrostatic Powder Coating Polyester, Red (RAL 3020)



## Product Data Sheet

### Deluge Valve

System:  
Water Extinguishing System

Data Sheet No.

Rev: 0

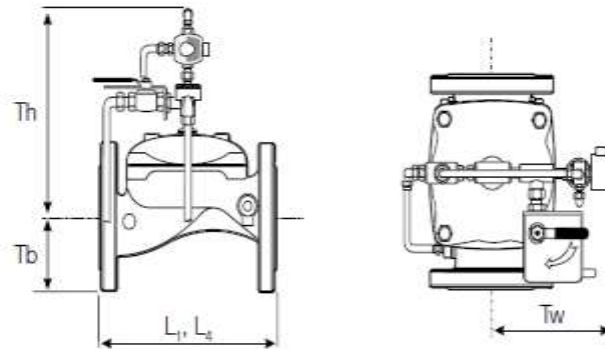
Date: 09/13/2020

Model No: AES-FS-001

AES-DSH-026

Page 3 of 6

## Dimensions



Size	1½"		2"		2½"		3"		4"		6"		8"		10"		12"		
	mm	inch	mm	inch	mm	inch	mm	inch	mm	inch	mm	inch	mm	inch	mm	inch	mm	inch	
Dimensions	L <sub>1</sub> <sup>(1)</sup>	205	8 <sup>1</sup> / <sub>16</sub>	205	8 <sup>1</sup> / <sub>16</sub>	205	8 <sup>1</sup> / <sub>16</sub>	257	10 <sup>2</sup> / <sub>16</sub>	320	12 <sup>10</sup> / <sub>16</sub>	415	16 <sup>5</sup> / <sub>16</sub>	500	19 <sup>11</sup> / <sub>16</sub>	607	23 <sup>14</sup> / <sub>16</sub>	725	28 <sup>9</sup> / <sub>16</sub>
	L <sub>2</sub> <sup>(2)</sup>	205	8 <sup>1</sup> / <sub>16</sub>	205	8 <sup>1</sup> / <sub>16</sub>	N/A	N/A	257	10 <sup>2</sup> / <sub>16</sub>	320	12 <sup>10</sup> / <sub>16</sub>	N/A	N/A	500	19 <sup>11</sup> / <sub>16</sub>	N/A	N/A	N/A	N/A
	Tw	255	10 <sup>1</sup> / <sub>16</sub>	255	10 <sup>1</sup> / <sub>16</sub>	255	10 <sup>1</sup> / <sub>16</sub>	255	10 <sup>1</sup> / <sub>16</sub>	255	10 <sup>1</sup> / <sub>16</sub>	255	10 <sup>1</sup> / <sub>16</sub>	255	10 <sup>1</sup> / <sub>16</sub>	255	10 <sup>1</sup> / <sub>16</sub>	255	10 <sup>1</sup> / <sub>16</sub>
	Tb	64	2 <sup>9</sup> / <sub>16</sub>	78	3 <sup>1</sup> / <sub>16</sub>	89	3 <sup>9</sup> / <sub>16</sub>	100	3 <sup>5</sup> / <sub>16</sub>	115	4 <sup>9</sup> / <sub>16</sub>	140	5 <sup>9</sup> / <sub>16</sub>	172	6 <sup>12</sup> / <sub>16</sub>	204	8 <sup>1</sup> / <sub>16</sub>	242	9 <sup>9</sup> / <sub>16</sub>
	Th	289	11 <sup>5</sup> / <sub>16</sub>	289	11 <sup>6</sup> / <sub>16</sub>	301	11 <sup>14</sup> / <sub>16</sub>	325	12 <sup>13</sup> / <sub>16</sub>	345	13 <sup>9</sup> / <sub>16</sub>	420	16 <sup>9</sup> / <sub>16</sub>	471	18 <sup>9</sup> / <sub>16</sub>	471	18 <sup>9</sup> / <sub>16</sub>	588	23 <sup>2</sup> / <sub>16</sub>

## Flow Properties

DN	40	50	65	80	100	150	200	250	300	350
Inch	1½"	2"	2½"	3"	4"	6"	8"	10"	12"	14"
Kv	57	57	78	136	204	458	781	829	1,932	1,932
Cv	66	66	90	157	236	529	902	957	2,231	2,231
K	3.2	3.2	4.2	2.9	4.0	4.0	4.4	3.9	3.6	3.6
Leq-m	9.1	9.1	12.1	13.7	14	27.4	45.8	108	57	57
Leq-feet	30	30	40	45	46	90	150	354	187	187



# Product Data Sheet

## Deluge Valve

Data Sheet No.

AES-DSH-026

System:  
Water Extinguishing System

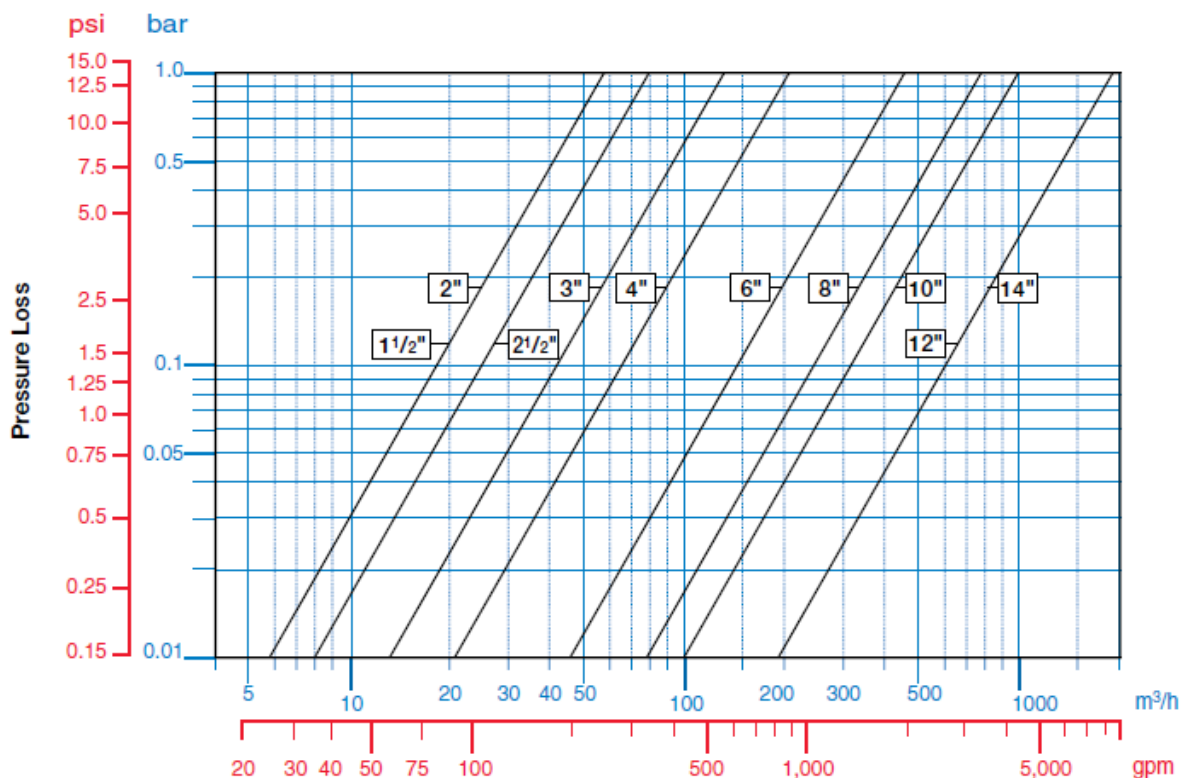
Rev: 0

Date: 09/13/2020

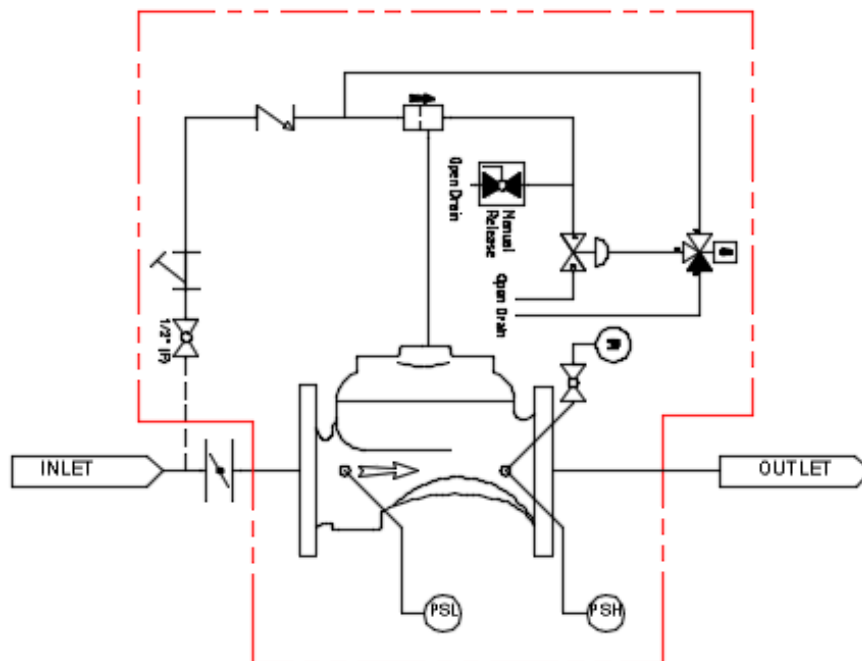
Page 4 of 6

Model No: AES-FS-001

### Flow Chart



### Piping and Instrument Diagram





Product Data Sheet

Deluge Valve

System:  
Water Extinguishing System

Data Sheet No.

Rev: 0

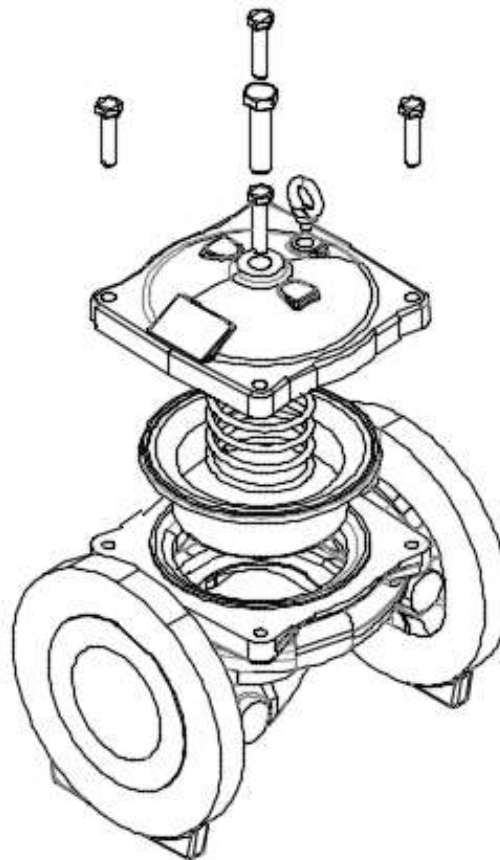
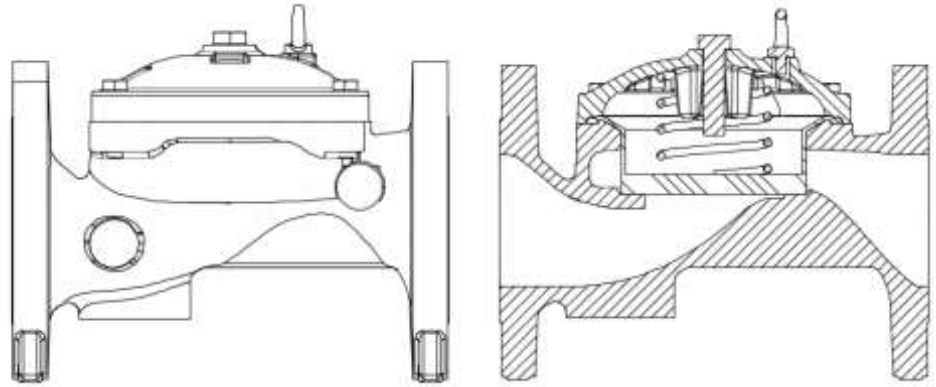
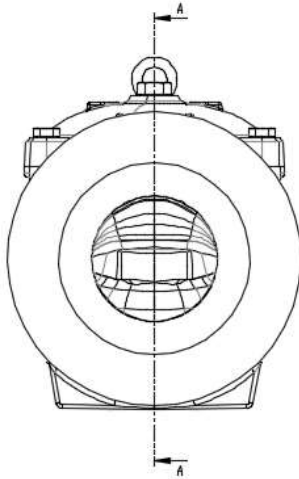
Date: 09/13/2020

Model No: AES-FS-001

AES-DSH-026

Page 5 of 6

**Sectional and 3D View**





Product Data Sheet

Deluge Valve

System:  
Water Extinguishing System

Data Sheet No.

Rev: 0

Date: 09/13/2020

Model No: AES-FS-001

AES-DSH-026

Page 6 of 6

**Valve Disassembling Parts**

